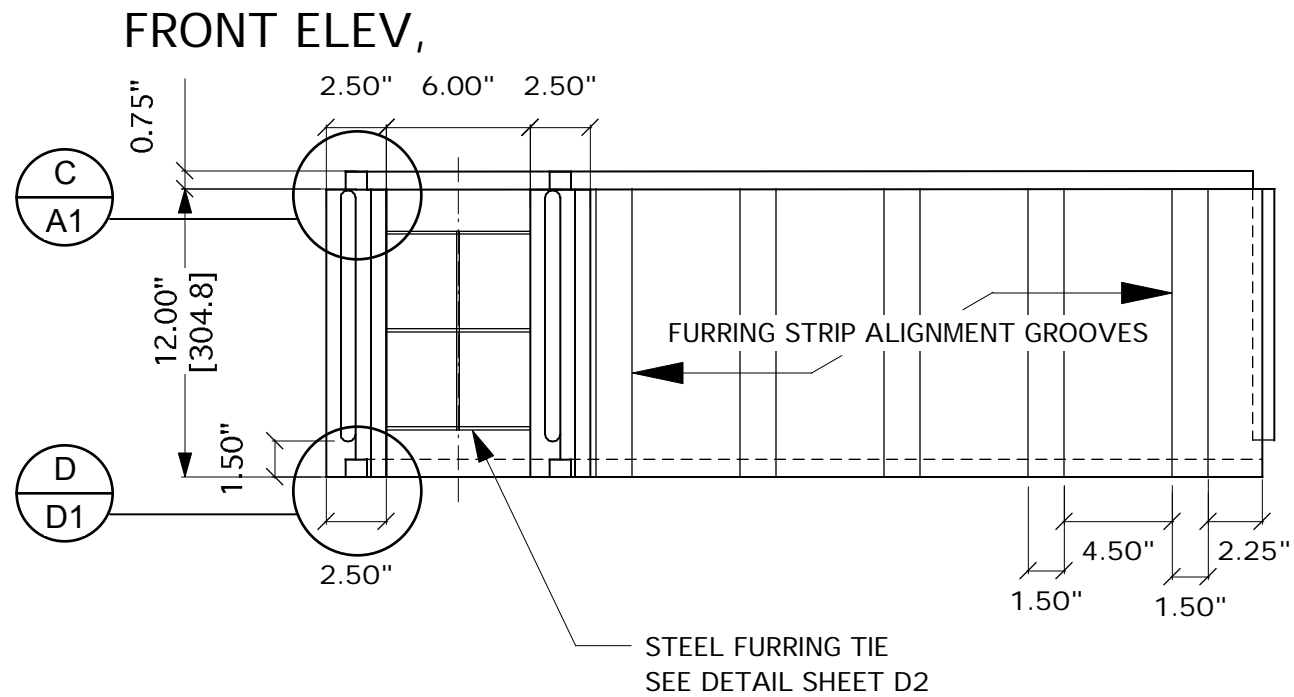
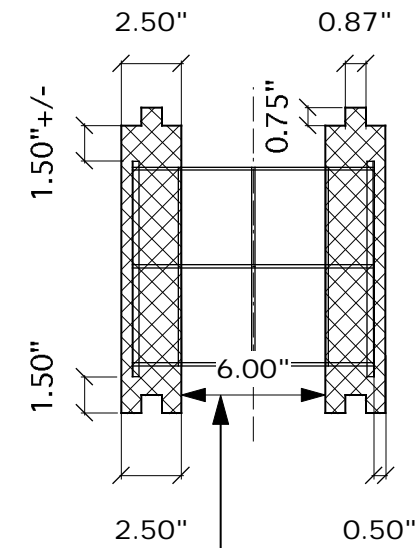


American Polysteel PS 4690-1L Scale 1.5"=12.0"

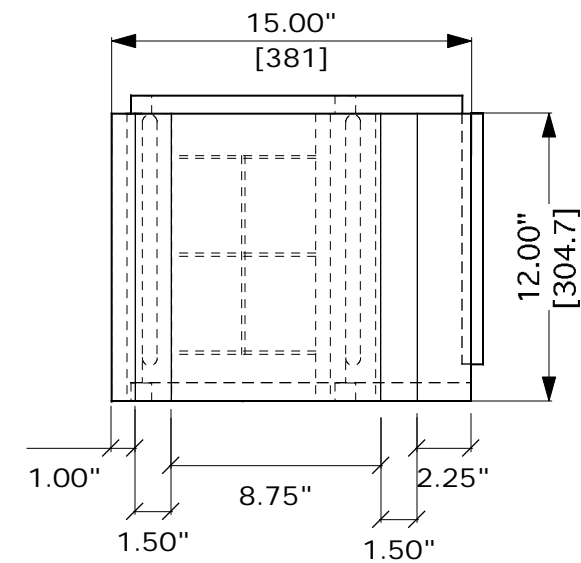


SECTION A

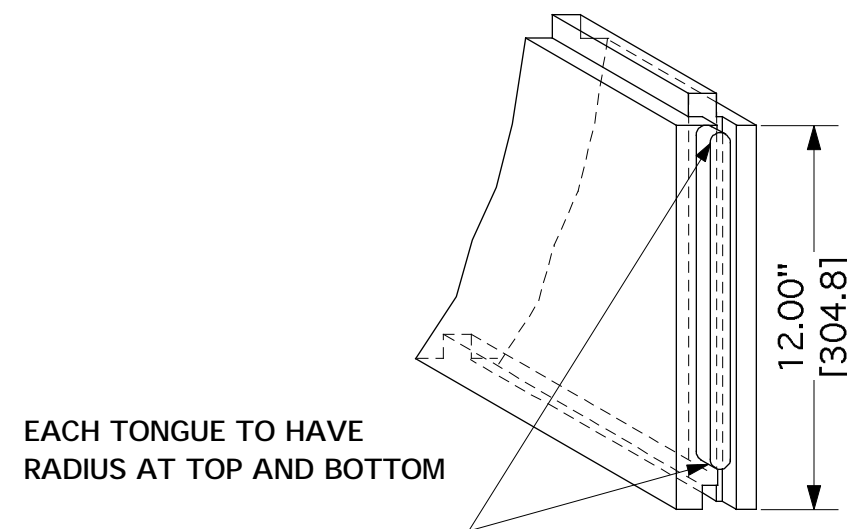


NOTE:
6" (152.4 mm) MINIMUM CAVITY

END ELEV,

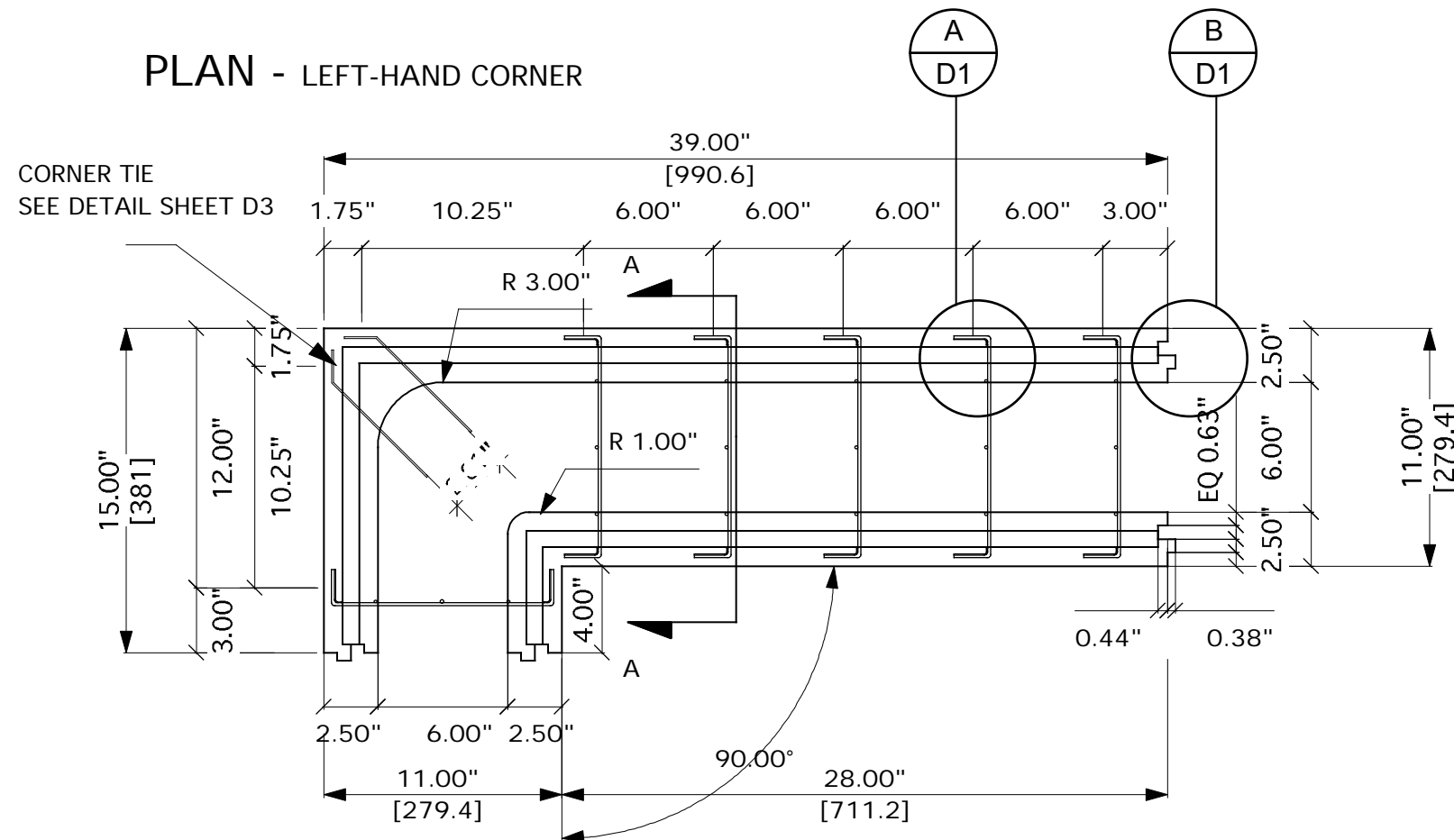


SKETCH OF END TONGUE & GROVE



NOTE;
SEE POLYSTEEL DETAIL SHEETS (D1-D3) FOR
ADDITIONAL INFORMATION

PLAN - LEFT-HAND CORNER



American Polysteel PS 4690-1L

SCALE: 1.5"=12.0"	APPROVED BY:	DRAWN BY: AMH
DATE: Mar 2002		REVISED:
Copyright 2002		DRAWING NUMBER: PS 4690-1L

American Polysteel 1-800-977-3676