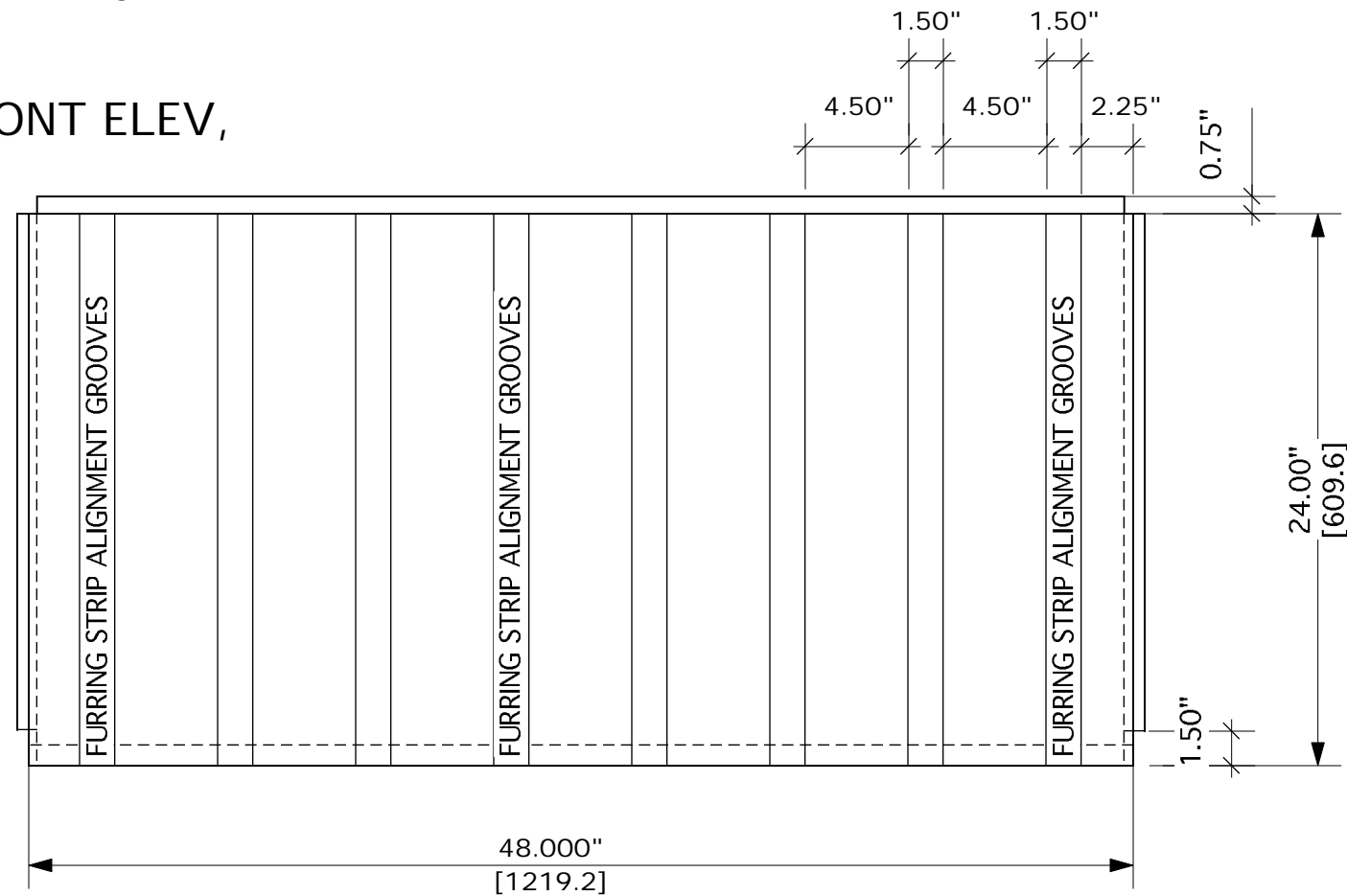
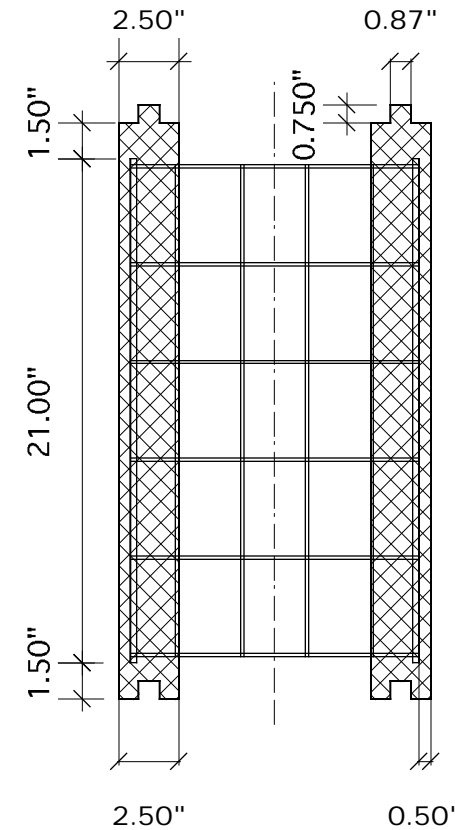


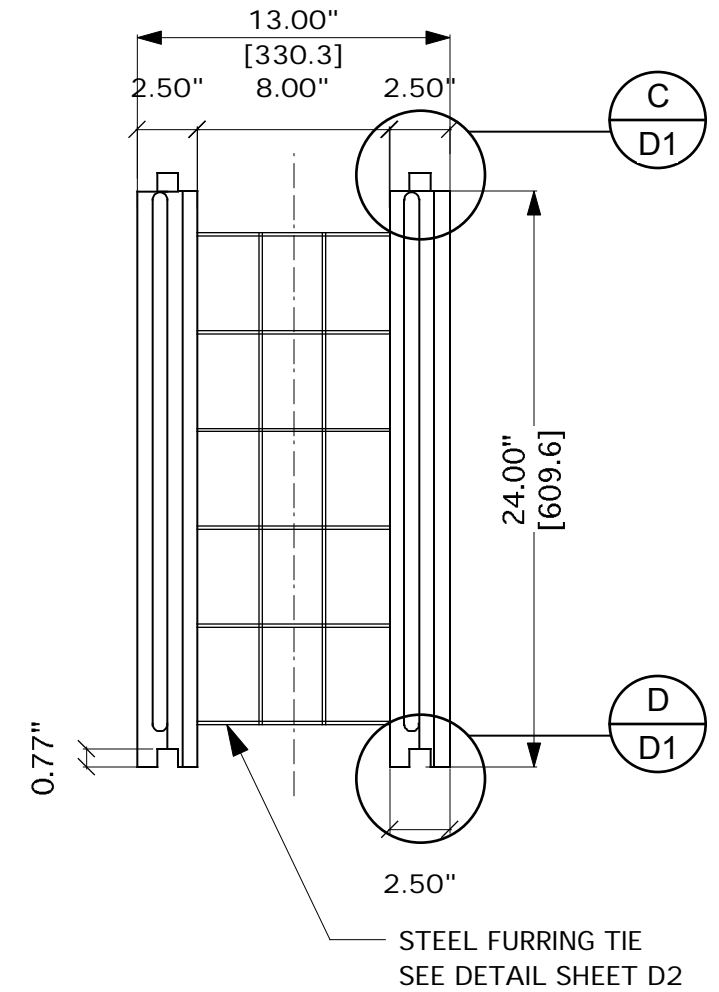
FRONT ELEV,



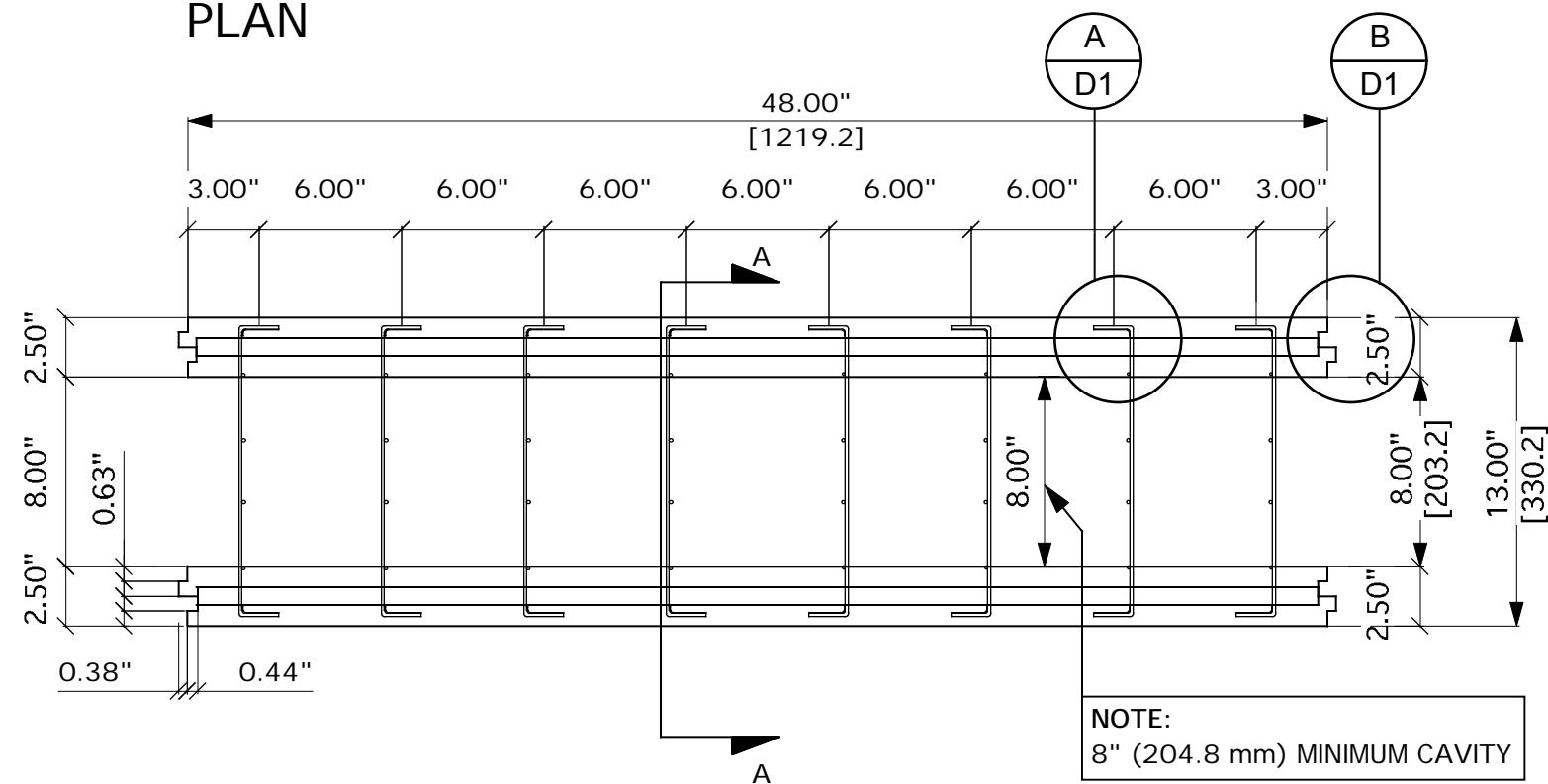
SECTION A



END ELEV,

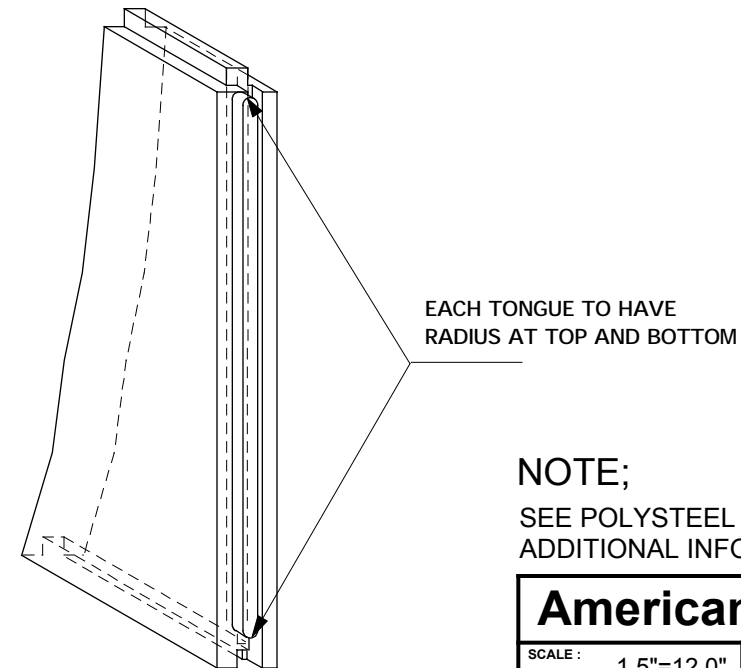


PLAN



NOTE:
8" (204.8 mm) MINIMUM CAVITY

SKETCH OF END TONGUE & GROVE



NOTE;
SEE POLYSTEEL DETAIL SHEETS (D1-D2) FOR
ADDITIONAL INFORMATION

American Polysteel PS 4800-2		
SCALE: 1.5"=12.0"	APPROVED BY:	DRAWN BY: AH
DATE: Mar 2002		REVISED:
Copyright 2002	DRAWING NUMBER:	
American Polysteel 1-800-977-3676	PS 4800-2	